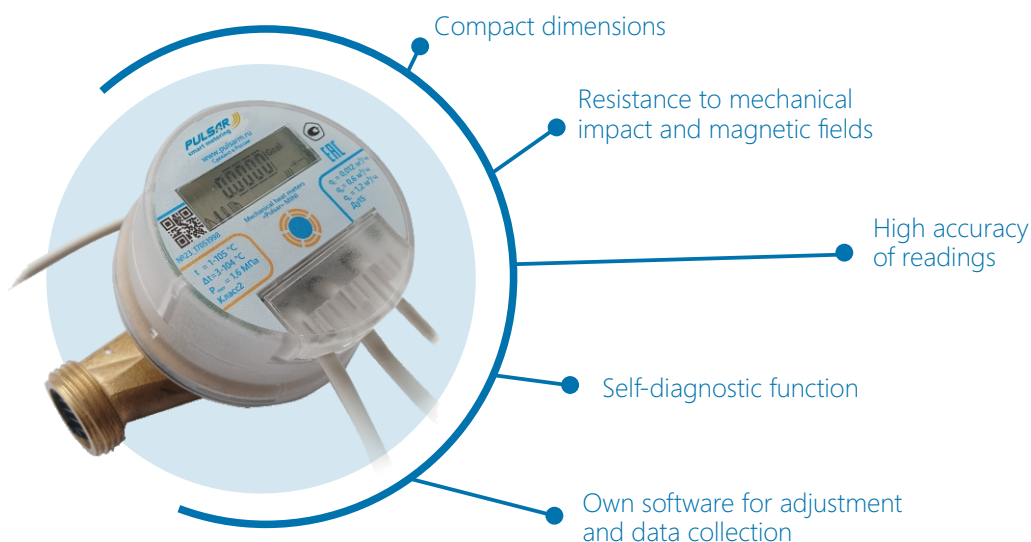


Mechanical heat meters «Pulsar» MINI

They are designed to measure the amount of thermal energy, cooling energy, thermal power, volumetric flow rate (volume), temperature, temperature difference, coolant (water) in heating and water supply systems.

Available according to EN 1434.



Interfaces

- Pulse output
- RS-485
- M-Bus
- LoRa
- Ultra narrow RF band (Pulsar IoT)

Technical data

Flow sensor type	Mechanical				
Nominal DN	15	15	15	20	20
Length of the pouring part, mm	110	110	110	130	130
Minimum flow rate q_i , m ³ /h	0,012	0,030	0,020	0,030	0,050
Nominal flow rate q_p , m ³ /h	0,6	1,5	1	1,5	2,5
Maximum q_s , m ³ /h	1,2	3	2	3	5
Connecting thread	G3/4B	G3/4B	G3/4B	G1B	G1B
Sensitivity threshold, m ³ /h	0,004	0,008	0,006	0,006	0,015
Pressure loss at q_p , MPa	<0,025				
Metrological class (EN1434)	2				
Dynamic range of flow measurement q_i/ q_p	1:50				
Maximum working pressure, MPa	1,6				
Operating temperature, °C	50				
Temperature measurement range, °C	1-105				
Temperature difference measurement range, °C	2-104				
Indicator	LCD, 8 digits+special characters				
Units of heat measurement	Gcal, GJ, kWh				
Data archive in non-volatile memory, hours/day/month	1488/184/60				

✉ export@pulsarm.ru
 📍 390027, Russia, Ryazan, Novaya str, 51V
 ☎ 7 (4912) 24-02-70

