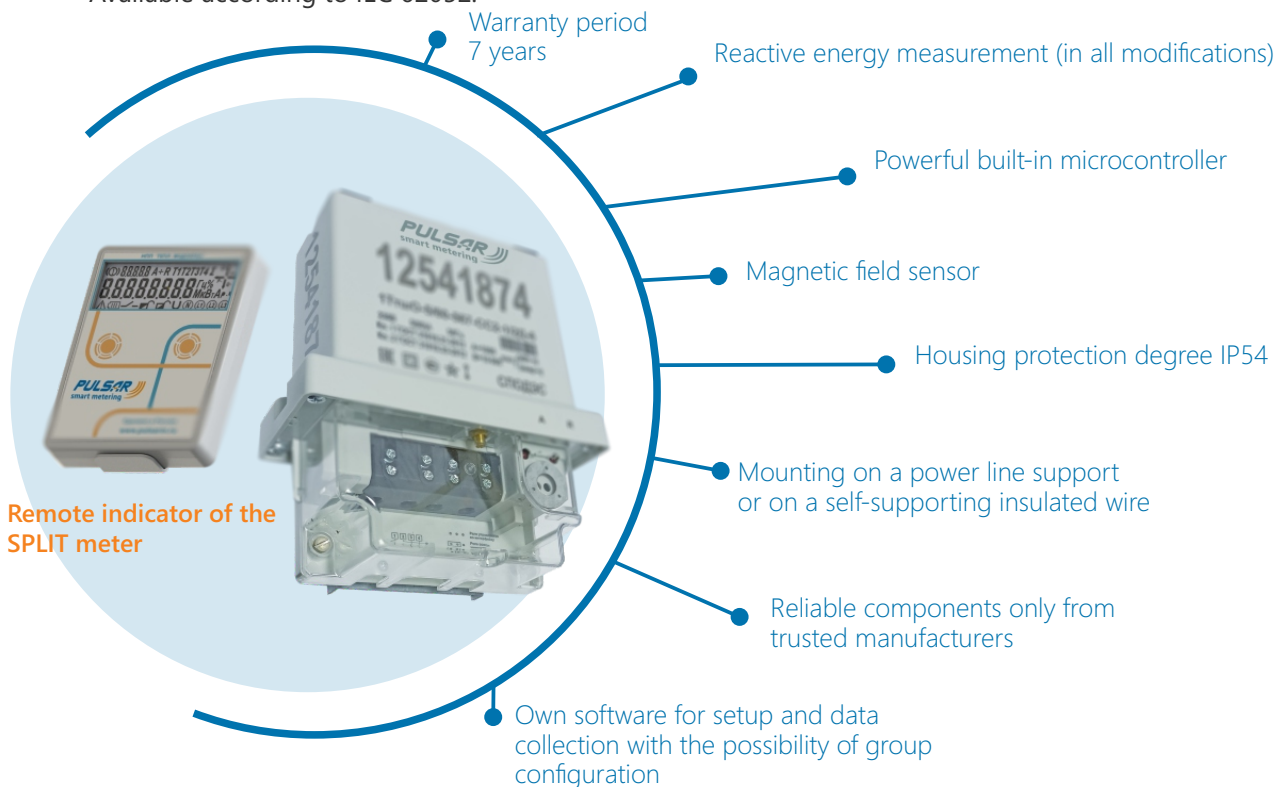


# Electricity single-phase multifunctional meters «Pulsar 1» SPLIT

Designed for measuring and accounting in multi-tariff mode of active (in one or two directions) and reactive electrical energy.

Available according to IEC 62052.



## Interfaces

- Optical port
- LoRa
- NB-IoT+2G
- NB-IoT
- 2G
- PLC+RF
- RF
- Combined channels possible

## Interfaces for communication with the remote control

- RF 868

## Technical data

Accuracy class for active energy/reactive energy measurement	1/1; 2
Rated voltage Unom, V	230
Base/maximum current Ib/Imax, A	5/60; 5/100; 10/100
Starting current when measuring active electrical energy, A	0,004-Ib
<b>Starting current when measuring reactive electrical energy for accuracy classes, A</b>	
1	0,004-Ib
2	0,005-Ib
Network frequency, Hz	50±7,5
Apparent and active power consumed by the voltage circuit (excluding communication module), at rated voltage and rated frequency, V · A (W) no more	10 (2,0)
Total power consumed by the current circuit at rated voltage and rated frequency, V · A no more	0,3
Established operating voltage range, V	(0,9...1,1) Unom
Extended operating voltage range, V	(0,8...1,15) Unom
Limit of the main absolute error of the clock under normal conditions, s/day	±0,5
Information protection	Seal, tamper sensors and password access
Operating temperature range, °C	-45 ... +70
Storage temperature range, °C	-45 ... +70
Archives with variable integration time/hours/days/months	100 days (at 30 minute intervals)/ 2 976/124/42
Meter weight, kg no more	1,2
Calibration interval, years	16
Lithium battery life, years	16
Average service life, years	35
Overall dimensions with replaceable communication module (height x width x depth), mm	221x180x98
Overall dimensions without replaceable communication module (height x width x depth), mm	180x180x92

✉ [export@pulsarm.ru](mailto:export@pulsarm.ru)

📍 390027, Russia, Ryazan, Novaya str, 51V

☎ 7 (4912) 24-02-70

