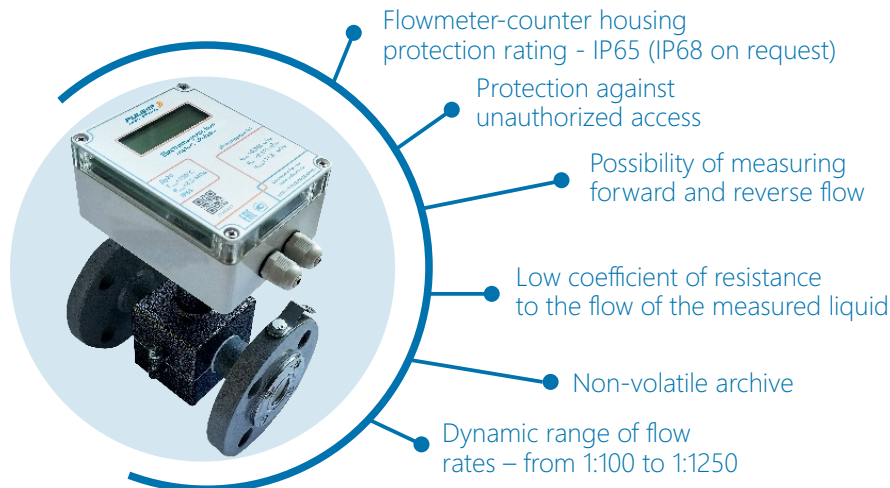


Electromagnetic flow meters «Pulsar»

They are designed to measure the volumetric flow rate and volume of water flowing through pipelines of hot and cold water supply systems and network water flowing through pipelines of heating systems, as well as other electrically conductive liquids.

Available according to ISO 4064.



Interfaces

- Pulse output
- RS-485
- RS-485 + pulse output

Standard size

- Flange type connection
DN15 — 300
- Sandwich type connection
DN15 — 100

Technical data*

Nominal DN	15	20	25	32	40	50	65	80	100	125	150	200	250	300
Length of the pouring part, mm flange	135	155	155	160	200	205	210	240	250	300	320	360	400	450
Length of the pouring part, mm sandwich	93	94	95	105	118	136	174	186	217	–	–	–	–	–
Water consumption, m3/h														
Minimum, Qmin, m3/h	0,0256	0,0452	0,0704	0,116	0,18	0,284	0,476	0,724	1,128	1,768	2,544	4,52	4,8	4,8
Transitional, Qt1, m3/h	0,064	0,113	0,176	0,29	0,45	0,71	1,19	1,81	2,82	4,42	6,36	11,3	12	12
Maximum, Qmax, m3/h	6,4	11,3	17,6	29	45	71	119	181	282	442	636	1130	1200	1200
Flow measurement range from Qmin to Qt 1, %	±2													
Flow measurement range from Qt 2 to Qmax, %	±1													
Nominal DC supply voltage, V	15													
Power consumption, W, no more than	6													
Maximum working excess pressure, MPa	2,5													
Working environment temperature, °C	+0,1...+150													
Average service life, years	12													
Verification interval, years	5													

✉ export@pulsarm.ru

📍 390027, Russia, Ryazan, Novaya str, 51V

☎ 7 (4912) 24-02-70

