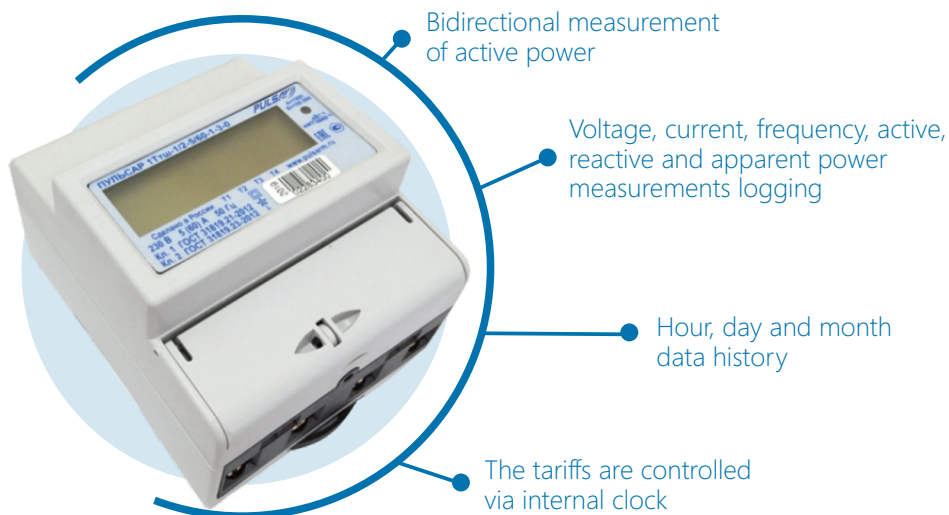


Electricity single-phase multi-tariff meters «Pulsar»

They are designed for measuring and recording active (in one or two directions) and reactive electrical energy in a multi-tariff mode.

Available according to IEC 62052.



Interfaces

- Optical port
- RS-485 with internal supply
- RS-485 with external power supply
- M-Bus
- WM-Bus
- LoRa
- Ultra narrow RF band (Pulsar IoT)

Technical data

Accuracy (reactive energy)	1 or 2 (IEC 62053-23)
Reference voltage U_n , V	230
Voltage range, U_n , %	80-120
Reference frequency, Hz, %	50±5
Current, I_b/I_{max} , A	5/60; 5/100; 10/100
Operating temperature, °C	-40...+60
Protection class	IP51
Real Time Clock accuracy, sec/day	+0,5
Time backup for RTC, years	32
Weight, kg	<0,4
Dimensions HxLxW, mm	65x100x83

✉ export@pulsarm.ru

📍 390027, Russia, Ryazan, Novaya str, 51V

☎ 7 (4912) 24-02-70

