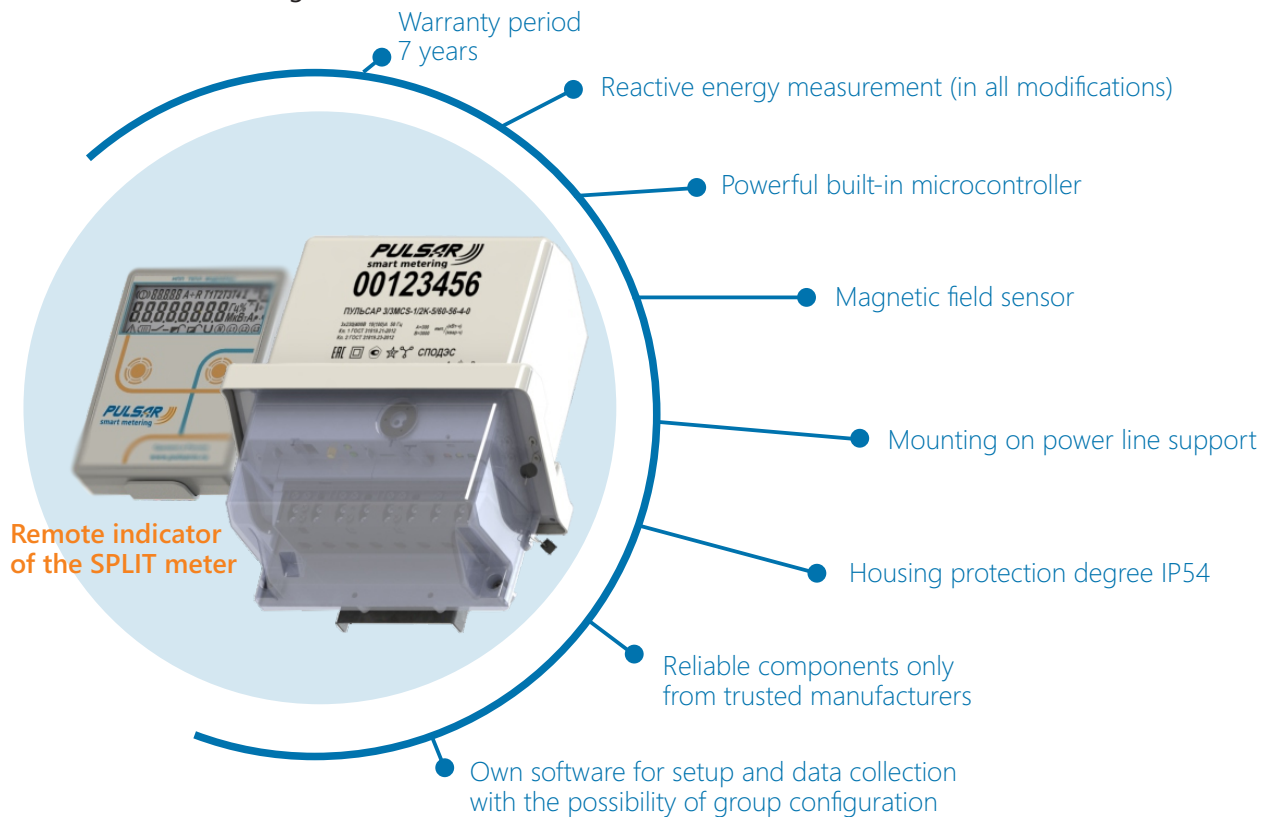


Electricity three-phase multifunctional meters «Pulsar 3» SPLIT

Designed for measuring and accounting in multi-tariff mode of active (in one or two directions) and reactive electrical energy.

Available according to IEC 62052.



Interfaces

- Optical port
- LoRa
- NB-IoT+2G
- NB-IoT
- 2G
- PLC+RF
- RF
- Combination channels possible

Interfaces for communication with the remote control

- RF 868

Technical data

Rated phase / phase-to-phase AC voltage Unom, V	3×230/400
Accuracy classes for measuring active/reactive electrical energy	1/1; 2
Limit operating voltage range, V	0...265
Rated network frequency, Hz	50±7,5
Base (Ib) / maximum current, A	5/60; 5/100; 10/100
Starting current when measuring active electrical energy	0,004·Ib
Starting current when measuring reactive electrical energy for accuracy classes, A	
1	0,004·Ib
2	0,005·Ib
Total and active power consumed by each voltage circuit (excluding communication module), at rated voltage and rated frequency, V · A (W) no more	10 (2,0)
Total power consumed by each current circuit at rated voltage and rated frequency, V · A no more	0,3
Data safety during power interruptions, years	32
Information protection	Seal, tamper sensors and password access
Maximum switching voltage of the built-in relay, V	250
Operating temperature range, °C	-45 ... +70
Storage temperature range, °C	-45 ... +70
Archives, with variable integration time/hours/days/months	100 days (at 30 minute intervals) /4320/180/42
Meter weight, kg no more	1,9
Calibration interval, years	16
Lithium battery life, years	16
Average service life, years	35
Overall dimensions (height x length x width), mm	256x236x124

✉ export@pulsarm.ru

📍 390027, Russia, Ryazan, Novaya str, 51V

☎ 7 (4912) 24-02-70

