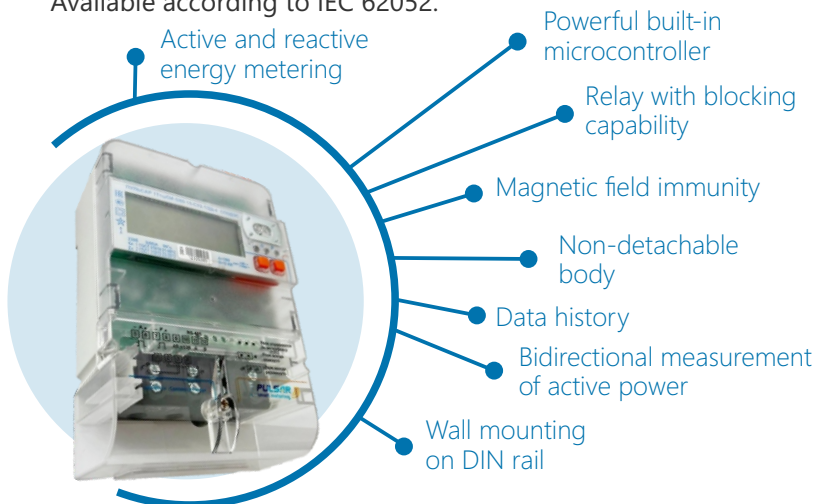


# Electricity single-phase meters «Pulsar» DLMS

They are designed for measuring and recording in multi-tariff mode active (in one or two directions) and reactive electrical energy.

Available according to IEC 62052.



## Interfaces

- Optical port
- RS-485
- RS-485, NB-IoT+2G
- LoRa
- NB-IoT+2G
- NB-IoT
- 2G
- PLC+RF
- RF

## Technical data

Accuracy class when measuring active IEC 62053-21/ reactive energy according to IEC 62053-23	Class 1/ 1 or 2
Rated voltage Unom, V	230
Base/maximum current Ib/Imax, A	5/60; 5/100; 10/100
Network frequency, Hz	50±7,5
Established operating voltage range, V	(0,9...1,1) Unom
Extended operating voltage range, V	(0,8...1,15) Unom
Network voltage measurement range, V	175...310
Basic voltage measurement error, %	0,5
Main current measurement error, %	0,5
Basic error of network frequency measurement, Hz	0,05
Limit of the main absolute error of the clock under normal conditions, s/day	±0,5
Data safety during power interruptions, years	32
Operating temperature range, °C	-40...+70
Storage temperature range, °C	-40...+70
Archives with variable integration time/hours/days/months	100 days (at 30 minute intervals) /4320/180/42
Meter weight, kg, no more	0,5
Calibration interval, years	16
Lithium battery life, years	16
Average meter service life, years	35
Overall dimensions (height x length x width), mm	117x114x64

✉ [export@pulsarm.ru](mailto:export@pulsarm.ru)

📍 390027, Russia, Ryazan, Novaya str, 51V

☎ 7 (4912) 24-02-70

